



GAT MONTHLY MEMBERSHIP PROGRESS REPORT

Results as of: 5/31/2023

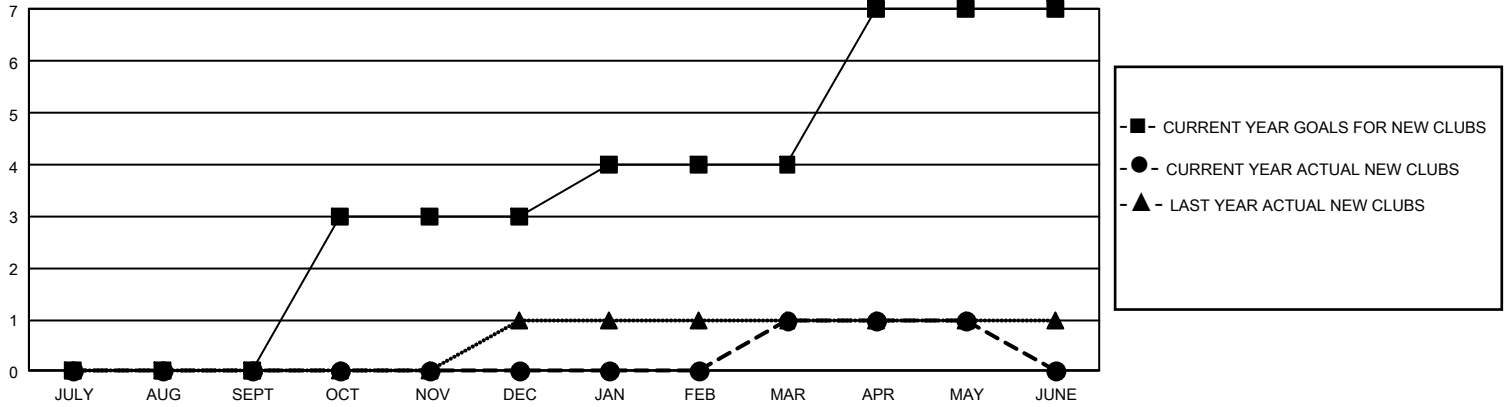
GMT Constitutional Area 1, Group O

REPORT DOES NOT INCLUDE CLUBS IN UNDISTRICTED AREAS.

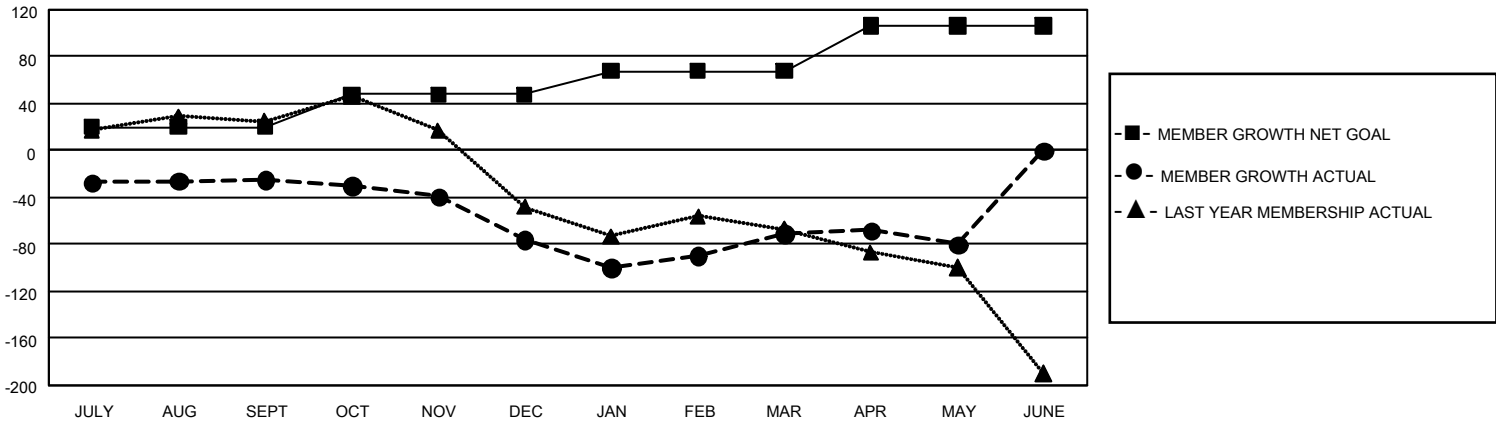
Clubs			
RESULTS FOR 2022-2023			
QUARTER	NEW CLUB GOAL	NEW CLUBS	DROPPED CLUBS
JULY/AUG/SEPT	0	0	2
OCT/NOV/DEC	9	0	1
JAN/FEB/MAR	3	1	3
APR/MAY/JUNE	9	0	1

Members			
RESULTS FOR 2022-2023			
QUARTER	MEMBER GROWTH NET GOAL	MEMBER GROWTH ACTUAL	DROPPED MEMBERS ACTUAL (including transfers)
JULY/AUG/SEPT	20	93	105
OCT/NOV/DEC	28	99	134
JAN/FEB/MAR	20	144	121
APR/MAY/JUNE	38	72	69

GOALS AND ACTUAL NEW CLUBS CUMULATIVE



GOALS AND ACTUAL MEMBERS CUMULATIVE



DROPPED CLUBS: 7	
DROPPED MEMBERS	
DECEASED	63
CLUB CANCELLED	21
OTHER	345
TOTAL	429

94 CLUBS OF 149 ADDED 1 OR MORE NEW MEMBERS

[CLICK HERE FOR CUMULATIVE MEMBERSHIP DATA](#)

GENDER DISTRIBUTION	
MALE	2,437 (62.20%)
FEMALE	1,480 (37.77%)
NON BINARY	0 (0.00%)
PREFER NOT TO ANSWER	1 (0.03%)
TOTAL FAMILY UNIT MEMBERS	871
FAMILY MEMBERS PAYING HALF DUES	448